

Georgy Porgy

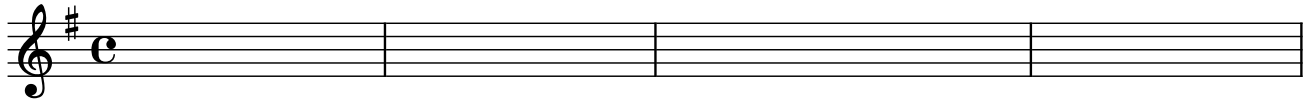
Toto

Intro

CM7

D6

Bm7/E Em7



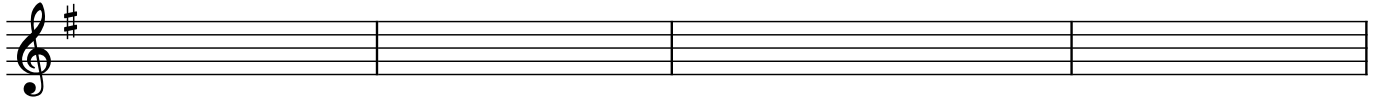
A

5

CM7

D6

Bm7/E Em7

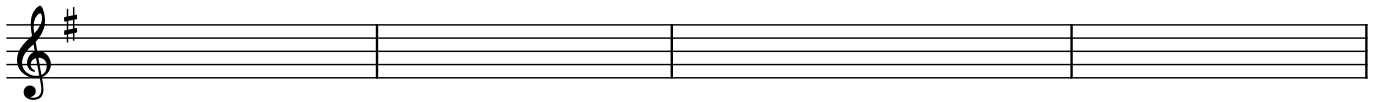


9

CM7

D6

Bm7/E Em7



B

13

CM7

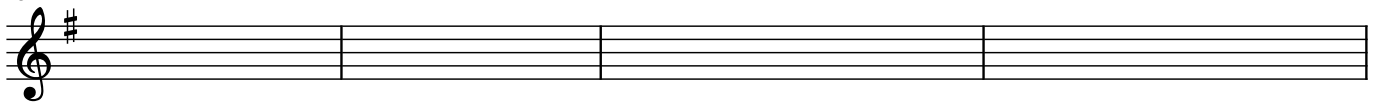
Am9

B7b9b13

B7

B7b9b13

B7



17

CM7

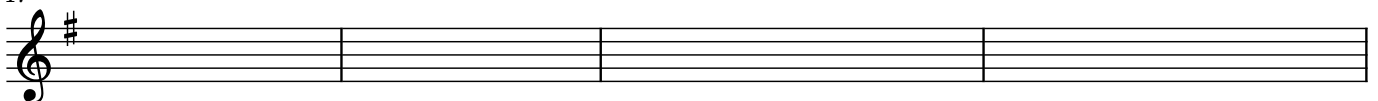
Am9

B7b9b13

B7

B7b9b13

B7



To Coda

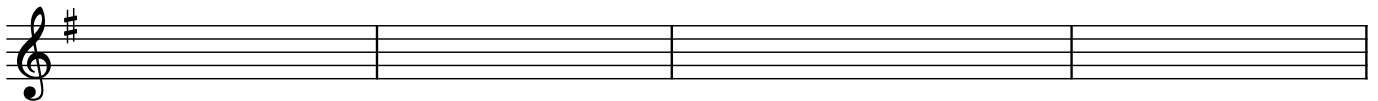
A

21

CM7

D6

Bm7/E Em7



25

CM7

D6

Bm7/E Em7



B

29

CM7

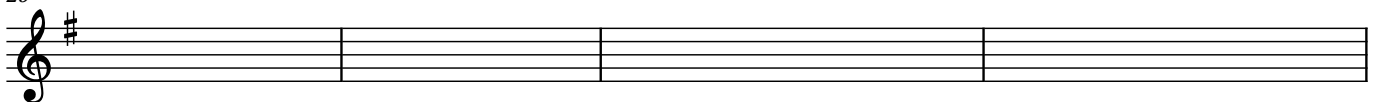
Am9

B7b9b13

B7

B7b9b13

B7



33

CM7

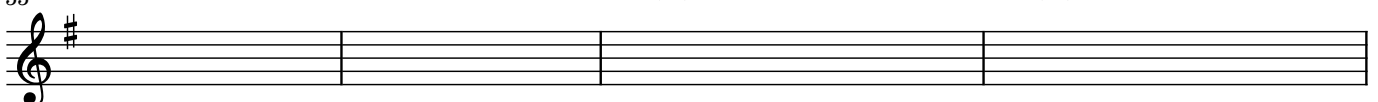
Am9

B7b9b13

B7

B7b9b13

B7



2 **C**

37 Dsus4/E Esus4/C# F#7b9b13 B7#9b13

41 Dsus4/E Esus4/C# F#7b9b13 B7#9b13

45 Dsus4/E Esus4/C#

47 F#7b9b13 B7#9b13

Inter

49 CM7 D6 Bm7/E Em7

53 CM7 D6 Bm7/E Em7

D.S.

57 Dsus4/E Esus4/C# F#7b9b13 B7#9b13

61 Dsus4/E Esus4/C# F#7b9b13 B7#9b13

65 Dsus4/E Esus4/C#

67 F#7b9b13 B7#9b13